

## PATRICK L. ALMANZA REEL 2020-21

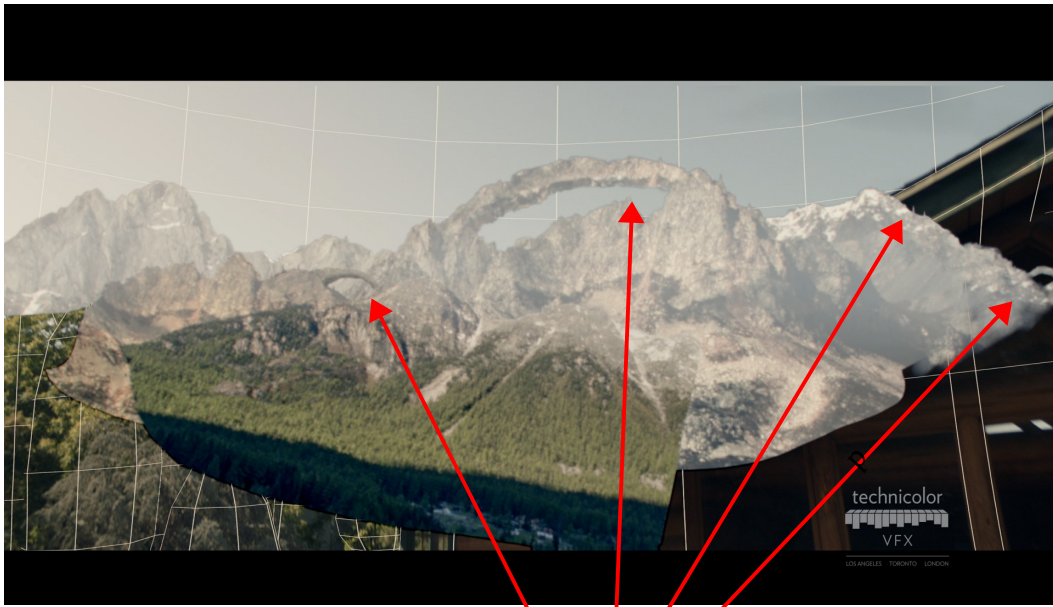
<http://patrickalmanza.com/html/REEL-2020.html>



STAR TREK: PICARD  
Crew and Gear Reflection Removal  
(Nuke)



Building removal/Tree fill  
3D Camera Tracking  
(Nuke)



Matte painting extensions and archs/spires  
Full composition  
(Nuke)



Edge replacement and refinement  
Mountain and Moons matte painting treatments  
(Nuke)



Tracked, created Rack focus and composited CG computer display.  
(Nuke)

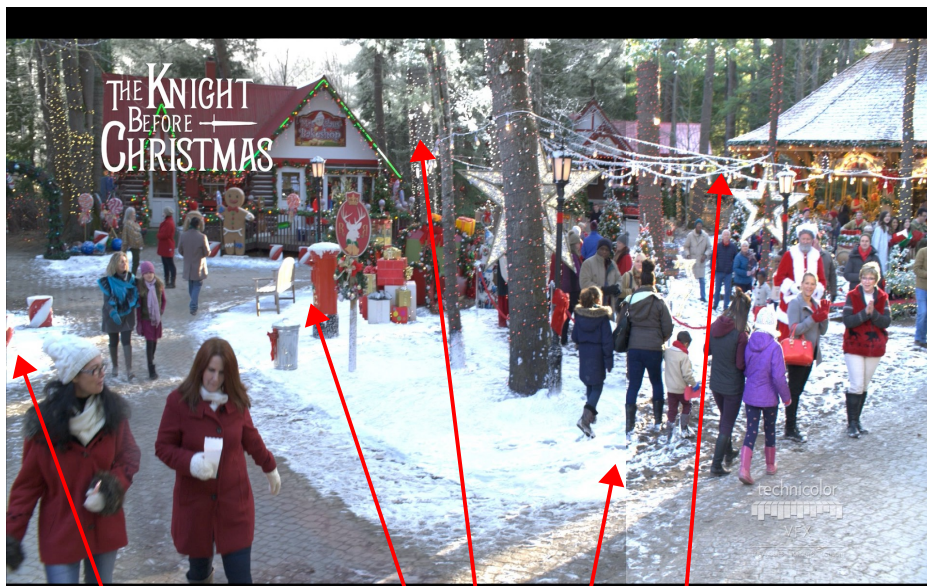


Blue Screen Extraction  
Mid-Ground Extensions  
Composited CG for Background  
Composited CG for Table Display  
(Nuke)





DEPUTY  
Painted Tear  
Composited explosive particular elements  
(Nuke)



THE KNIGHT BEFORE CHRISTMAS  
Added 2D Snow to the ground and MG Elements  
Added Footprints  
Added Winter White to BG  
(Nuke)



Added 2D Snow to the ground and MG Elements  
 Added Winter White to BG  
 (Nuke)



BLACK BOX  
 Created Motion Design of 2D Computer Interface  
 3D Tracking  
 Final Composition  
 (After Effects)



TURN: WASHINGTON'S SPIES  
 Tracking Mark Removal  
 Green Screen Removals  
 Final Composition adding Troops  
 Matte Painting and Extension  
 (After Effects)



Created Day for Night matte painting extensions for use in various shots  
 (Photoshop)





RAIDERS OF THE LOST ARK  
Cobra and fire reflection removals  
Scratch Removal  
(After Effects, Combustion)



THE GODFATHER PART II  
Camera tape removal  
(After Effects, Combustion)



LIFE AFTER PEOPLE  
 Colored and layered photo matte painting  
 Composited After Effects Rain particular system  
 Final Composition  
 (After Effects, Photoshop)



LIFE AFTER PEOPLE  
 SANTA MONICA PIER: Created Matte Painting  
 Layered, Colored, Animated and Composited Final Shot  
 (After Effects, Photoshop)





LOS ANGELES INTERNATIONAL AIRPORT:  
Created Matte Painting  
Layered, Colored, Animated and Composited Final Shot  
(After Effects, Photoshop)



BURNING HOLLYWOOD HILLS HOME:  
Created Matte Painting  
Layered, Colored, Animated and Composited Final Shot  
(After Effects, Photoshop)



THE UNIVERSE  
SHIP ON ICE TO JUNGLE:  
Rotoscoped, colored, painted and composited scanned plates through transition.  
(After Effects, Photoshop)



SNOWY MOUNTAIN BLAST:  
Created Matte Painting  
Layered, Colored, Animated and Composited Final Shot  
(After Effects, Photoshop)



EARTH SPIN AND ICY AFRICA:  
Created Africa and Frozen Glacier Matte Painting, composited transition  
(After Effects, Photoshop)